

Art Musical Instruments Inc.

Harry Pedler & Sons

Elkhart, Indiana

- 1872 Harry Walter Pedler Sr (photo 1) is born in London (*NLI*).
- 1890s Harry is working for Rudall Carte & Co (*NLI*).
- 1905 Harry comes to US with wife Louisa and son Harry Jr.
- 1906 Harry is naturalized in PA.
- 1910 Conn horn factory worker living in Elkhart (census).
- 1911-1916 William Gronert is pres. of the Elkhart Band Inst. Co.
- 1916 Pedler quits Conn and starts the American Manufacturing Co. with William J. Gronert, #430 Baldwin St. (Gronert was a secretary and factory manager for Conn 1885-1910).
- 1918 Harry Jr. (1899-1983, photo 2), clarinet maker for the Am. Mfg Co (draft).
- 1919 Gronert dies in July & the company re-named Harry Pedler Co perhaps after the 1920 Census; woodwinds only.
- 1920 Harry Sr listed as Amer. Mfg. Co. owner; Harry Jr is instrument maker; sister Margaret is a clerk (census).
- 1922 Harry Pedler Co., #430 Baldwin St., Harry Sr. pres, Harry Jr. vp, Margaret Pedler sec & tres (dir).
- 1930 Harry Sr. semi-retires and sells to John Martin. Census has Harry Sr as factory manager, Harry Jr as sales manager, and Thomas Howard Pedler (1908-1991) as assembler.
- 1931 Both Harrys resign from the Pedler Co in April.
- 1932 Gus Buescher and Harry Pedler Sr. form Art Musical Instruments with FA Buescher (photo 3) in charge of brass and Pedler doing the woodwinds. "American Triumph" models were the low-end brass and "Art" models were high end (source?).
- Art Musical Instruments is incorporated with \$450,000 capital stock. FA Buescher, pres, RS Stryker, vp (owner of a financial house), and WH Dennison, sec & tres. The factory is at 112 W. Crawford St, Elkhart (*MTR*, Aug/Sep).
- 1935 American Triumph trademark logo used since 10/19/1935.
- 1937 Buescher dies & Art becomes Harry Pedler & Sons (dir).
- 1939 Harry Sr. is president of Harry Pedler & Sons.



- 1940 Harry Sr is manager, Harry Jr is sales office manager, Thomas is factory superintendent, and Sidney (another son, 1910-2001) is factory foreman (census).
- 1946 Harry Sr is a retired widower.
- 1950 Harry Sr dies on September 25.
- 1953 Harry Pedler & Sons is listed as a current brass maker.
- 1958 Selmer buys the Harry Pedler & Sons brass factory.

Art Musical Instruments (1932-1937)

Trumpet #0121, American Triumph (photo 1)

Trumpet #02xx, American Triumph (photos 2&3)

Trumpet, Symphony Model #702 (photo below)



There are very few of these early trumpets found with Buescher's name engraved. After his death in November of 1937, the company name changed to Harry Pedler & Sons. This should not be confused with Pedler & Co. which is separate and dealt with woodwinds.

Harry Pedler & Sons Instruments (1938-1958)

American Triumph was the student model and have serial numbers found ranging from 7,000 to 95,000.

Trumpet #12567, DeKay in engraving (photo 4 on right)

Trumpet #40651 (photo 5)

Cornet #49505 (photo 6)

Trumpet #93100 (photo 7)

ART was the better model and have serial numbers found ranging from 23,000 to 32,000 (also #99578, photo next page).

Trumpet #23xxx (photo 8); these early models had a double brace on the tuning slide, they all have the unique finger rings.

Trumpet #31840, 1st slide saddle added (photo 9, bottom right).



Other Pedler & Sons Instruments:

Art Master Cornet, unknown #, this just says “Master Elkhart” so may be attributed to Pedler due to the design (photo 1).

Orpheum Supreme Trumpet, unknown #, same design as the ART model except for X brace, Pedler name is not on it so it may have been a stencil for another company (photo 2).

Lyons Monarch Trumpets: Some of the Monarch model trumpets offered by the Lyons Band Instrument Co. are ART models. Serial numbers 28245 (photo 3) and 31837 (photo 4) are in line with the Pedler numbers.

Art model #25863 at right photo 5.

Art model #26389 below (author’s photo)



Trumpet #99578 below



Master Art #119479 (author’s photo)



Art Musical Instruments Trumpet #0392

This rare example dates to the early 1930s and is the design used later by Pedler & Sons for their Art model (top R photo & below).



There are some William Frank instruments with what appears to be the same valve casing, but on closer inspection, you can see that Frank's design is taller. They do seem to have the same supplier for the pinky hook. The Frank Classic model below is an example from the Barrington plant just before they closed in 1956.



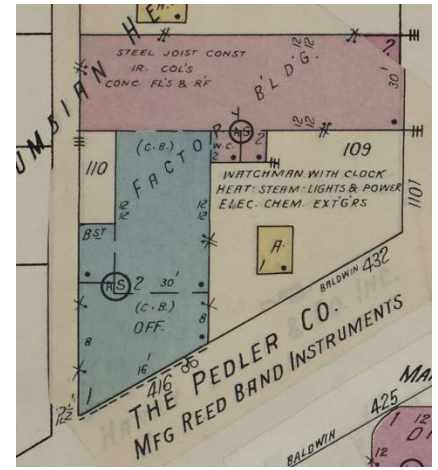
Frank uses this design from #11000 through this one at #15160. They never match Pedler exactly, but the pinky hook always matches the Pedler Art model. Was one company the source for the other, or was one just copying?

1958 Pedler ad from Barth-Feinberg catalog



Pedler Factories:

#430 Baldwin St: This was the woodwind factory from 1916 until 1931. It was located opposite the Martin factory.



#112 West Crawford St: This was the factory for Art Musical Instruments in 1932 then Pedler & Sons after 1937. It was closed in 1958. This map is from 1950. It is now a vacant lot.

